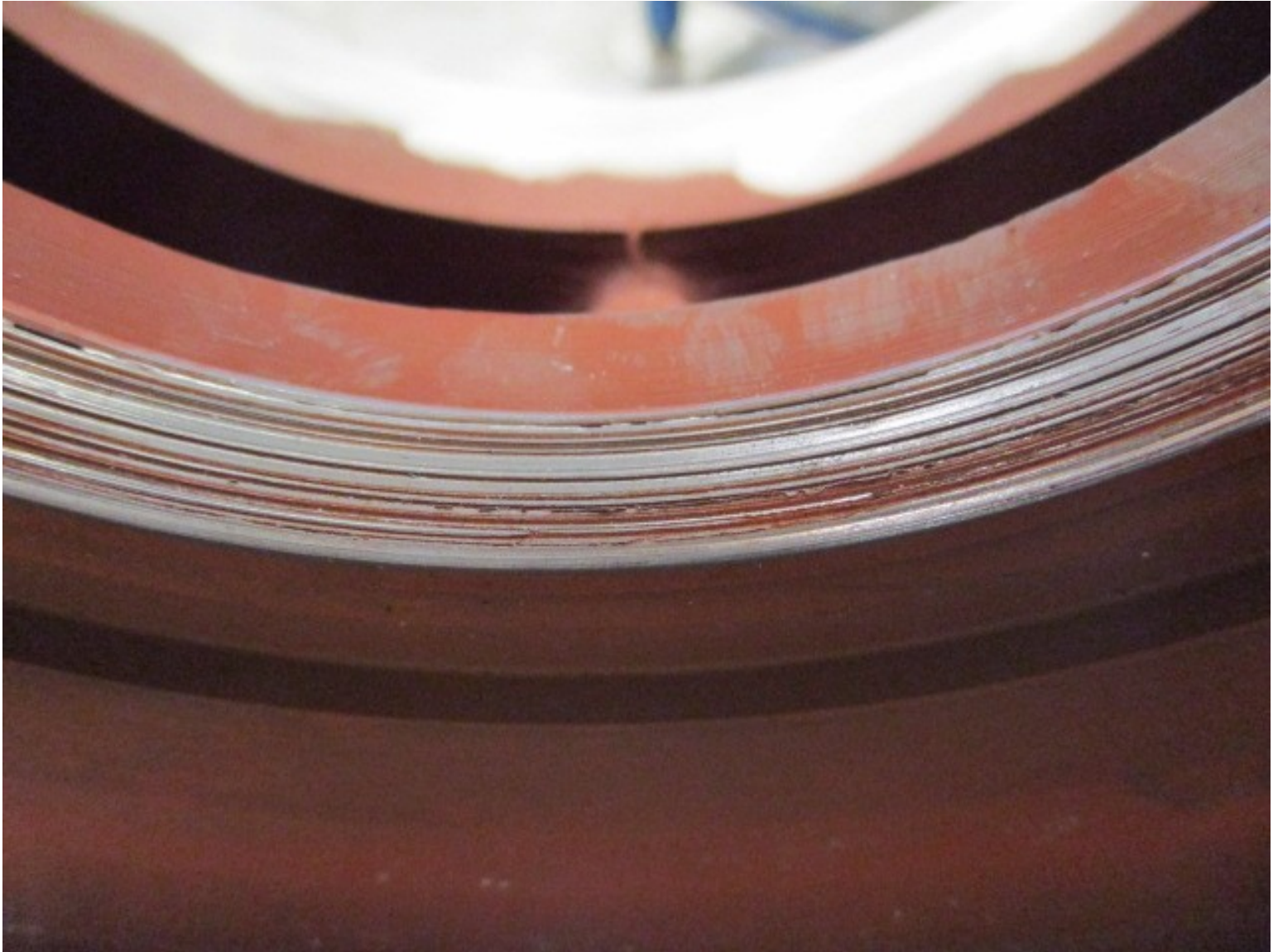




The Hidden Costs of Cheap Repairs



Why Technical Expertise plays a Critical Role in Equipment Maintenance

As the industrial world becomes more competitive, reducing costs is key for maintaining an advantage in the marketplace. As such, many end users have become more cost-conscious when approaching equipment repair. In some services- where equipment is not complex and performance doesn't affect process availability or quality- this strategy can provide some benefit. However, the short-term gain of a lower repair price often turns into long-term cost increases when a lack of engineering capability



impacts equipment reliability and performance.

The importance of engaging with a facility that has strong engineering capabilities and subject matter expertise was proven during a series of boiler feed pump repairs for a Canadian biomass power plant. Like many biomass facilities, this plant had segmental ring boiler feed pumps, also commonly referred to as BB4 pumps. This is a complex design installed in a high energy, critical application, with numerous stacked and nested components that must be kept in alignment.



In this case, a small shop had completed several repairs that had resulted in high vibration and performance issues. These pumps were a legacy design that was no longer supported by the OEM and required engineering knowledge to properly refurbish and set the balance device. As such, it was important to find a repair partner that had a strong understanding of pump design. The plant worked with Hydro's Scotford facility to bring these "bad actor" pumps back to optimal performance.

Read the full case study in [World Pumps](#)' March/April 2025 edition [here](#).