



# Capability Spotlight: Verify Pump Performance

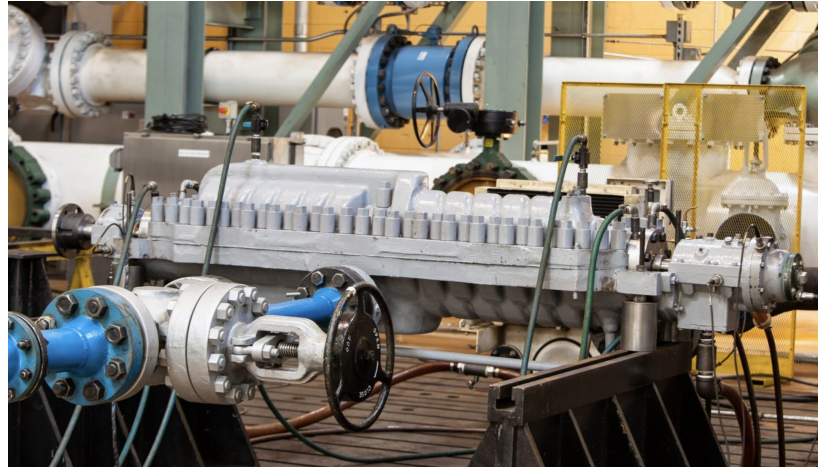


**VERIFY PUMP PERFORMANCE**

**CAPABILITY SPOTLIGHT**



Performance testing in a controlled environment is an important tool for pump designers and users alike. Understanding how the pump will react hydraulically and mechanically throughout the full range of operation enables improved equipment reliability, optimized efficiency, and reduced operating and maintenance costs.



In the aftermarket, performance testing helps equipment owners:

- Identify discrepancies between actual and expected performance before equipment is returned to the field
- Validate acceptable mechanical performance of critical equipment post-repair- before significant damage occurs
- Confirm effectiveness of hydraulic modifications by validating that theoretical performance is accurate and repeatable


To support end users in understanding equipment health and performance, Hydro built its Certified Performance Test Lab at the HydroAire 40<sup>th</sup> Street service center in Chicago. Our test lab was the first to be certified by the Hydraulic Institute's [Pump Test Lab Approval Program](#), and all testing is completed in accordance with Hydraulic Institute (HI) 14.6/40.6 and/or API 610, ASME, or ISO, as relevant.

**Hydro, Inc.**  
1126 West 40th Street, Chicago, IL

*Hydro, Inc. pump test laboratory located at 1126 West 40th Street, Chicago IL has been audited by Intertek per the requirements of HI 40.7 Program Guide for Pump Test Laboratory Approval and has been approved by the Hydraulic Institute as an Approved Pump Test Laboratory*


*Pump test standard(s)*  
**HI 40.6 Methods for Rotodynamic Pump Efficiency Testing**

*Pump type(s) certified to test:*  
ESFM (OH0, OH1)      RS-V (VS8)  
ESCC (OH7)            VT-S (VS0)  
IL (OH3, OH4, OH5)

**PUMP TEST LAB**  
  
**APPROVED**

Approval Registration Number:  
000101

  
**Michael Michaud**  
Executive Director, Hydraulic Institute

  
**HYDRAULIC INSTITUTE**  
PROUD MEMBER

Hydro's test lab is tailored to the demands of the aftermarket, focusing on flexibility and data transparency. Instead of moving the piping to the pump, Hydro's Test Lab moves the pump to the piping:

- A 36'x20' baseplate allows for quick and customized installation
- A multitude of piping inlets/outlets suitable for a wide range of nozzle sizes
- Accommodates hundreds of different pump configurations



- Allows multiple pumps to be staged for testing simultaneously

This flexible configuration enables Hydro to set the standard for turnaround times on aftermarket testing. In addition to common offerings such as hydraulic performance, mechanical performance, NPSH, endurance, and critical speed testing, Hydro has performed custom testing configurations to help end users understand specific problems. This is illustrated in the Test Lab's [inaugural test](#), which was a series of tests for a nuclear safety-related service to help an end user prove to the NRC that this service was capable of handling transient air voids in the system.

[Learn more](#) about Hydro's Certified Performance Test Lab or [contact us](#) to schedule a pump test.