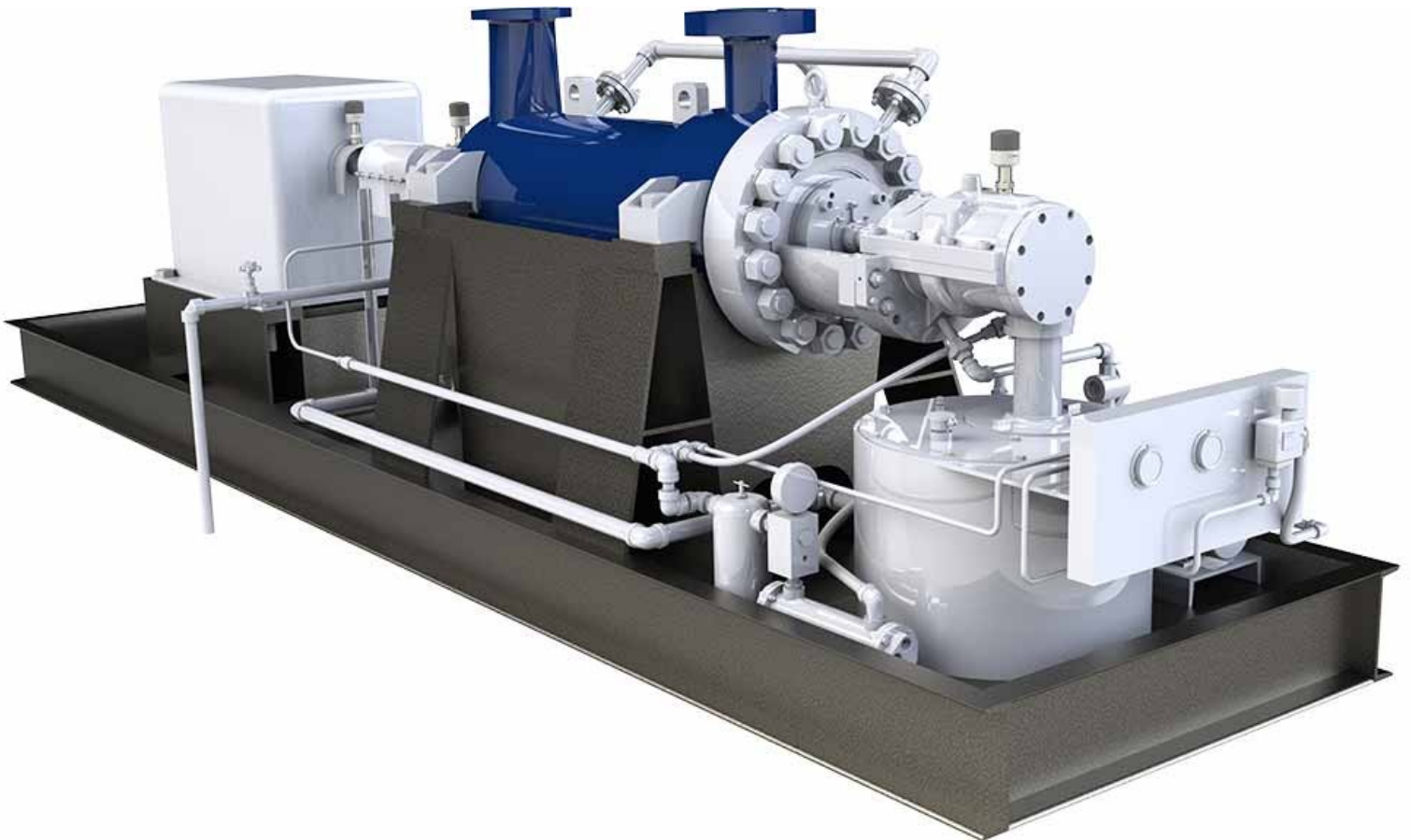




# Wireless Sensor Data Integration Into Existing Plant Historian



A large American energy company wanted a new data collection system to be integrated into its site historian along with process trending software to better diagnose system-related issues that can lead to maintenance issues.

Thanks to the help of an aftermarket service company, the energy company combined multiple sources of data and can now view complex mechanical vibration phenomena in parallel with plant process data. By comparing the two sets of data side by side, plant personnel will correlate process conditions with mechanical vibration data.

The service provider's history of pump and rotating equipment knowledge helped to provide actionable analysis of pumps and other rotating equipment health—and a mechanism to provide additional engineering solutions to complex problems. [Combined with the energy company's focus on](#)



[reliability and a history of maintaining their equipment, this system provided an improved method of data collection and analysis.](#)

Source:

<https://www.pumpsandsystems.com/wireless-sensor-data-integration-existing-plant-historian>